



www.kirkkey.com

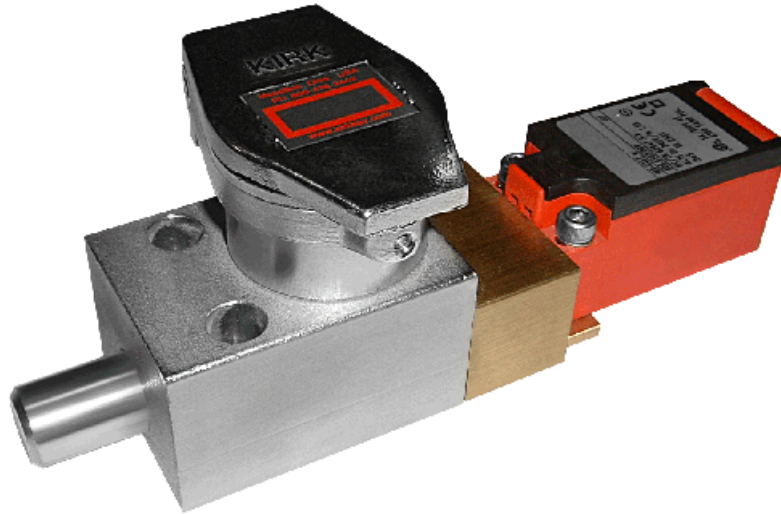
Luft Brasil Ind. Com. Ltda

R. Dom Andrés Lamas, 56
Tataupé São Paulo - SP
(11) 3795-0000

www.luftbrasil.com.br



Type Thermoplastic Bodied Switch



Thermoplastic bodied electrical contacts offer the best protection against water ingress. These auxiliary contacts are available for four styles of the HD Series mechanical bolt interlocks and two styles of access interlocks:

Mechanical Bolt Interlocks:

- Type F (SD Series Data Sheet 1.1)
- Type B (SD Series Data Sheet 1.2)
- Type T (HD Series Data Sheet 1.3)
- Type D (HD Series Data Sheet 1.4)
- Type FN (HD Series Data Sheet 1.7)

Access Interlocks:

- Type D (SD Series Data Sheet 1.4)
- Type DM (SD Series Data Sheet 1.5)

The contacts can be used to provide remote indication of the locking bolt position or to switch control circuitry.

Contact Status for Type F, B, T, FN & D:

The contacts respond directly to the movement of the locking bolt when the key is turned. Option A comes with 2 N/O & 1 N/C 5 amp contacts. Option B comes with 4 N/O & 2 N/C 5 amp contacts (two switches mounted side by side). The contacts change state when the key is turned and the locking bolt is extended. Please reference the drawing on page 3.

To order the auxiliary contact option, put "A" or "B" in the appropriate column of the interlock part number. Reference the HD Series Ordering Guide and the drawing on page 3.

Contact Status for Type DM:

The contacts respond to the position of the DM latch bolt. When the door is locked, two sets of contacts are closed and one set is open. When the door is unlocked, the contacts switch state (two sets open, one set closed). NOTE: Option B is not available on the Type DM.



www.kirkkey.com

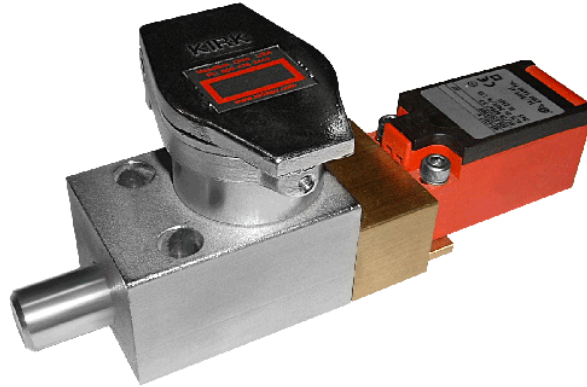
Luft Brasil Ind. Com. Ltda

R. Dom Andrés Lamas, 56
Tataupé São Paulo - SP
(11) 3795-0000

www.luftbrasil.com.br



Type Thermoplastic Bodied Switch



OPTIONS

- Standards: VDE 0660 T200, DIN EN 60947-5-1, IEC 60947-5-1.
- Utilization Category: AC-15, Ue/Ie 240V/1,5A.
- Approvals: cCSAus B300 (same polarity).
- Enclosure & Cover: Thermoplastic, glass fibre reinforced (UL 94-V0).
- Hinged Snap Lid: For quick and easy access (screwdriver release). Lid hinges open to 135 degrees.
- Forced Disconnection of NC Contacts: To IEC/EN 60947-5-1, Annex K.
- Temperature Range: -30 degrees C (ice free) to +80 degrees C.
- Mechanical Lifecycle: 200,000 operations.
- Screw Terminals: Self-lifting clamps for easy wiring, Numbered in accordance with DIN EN 50013.
- Ingress Protection: IP65 acc. to EN 60529.
- Rated Insulation Voltage: 250V AC.
- Rated Operational Voltage: 240V.
- Continuous Thermal Current: 5 Amp.
- Cable Entrance: M20 x 1.5 thread. The switch is supplied with .20 - .35" cable gland installed. An M20 x 1/2" FIP adapter is supplied with each switch for use with 1/2" conduit.
- EU Conformity: CE Marked
- Weight: The A Option adds 9.6oz / 272g and the B Options adds 16oz / 453g to the weight of an interlock.

HD SERIES - SPECIFICATION DATA SHEET 2.3



www.kirkkey.com

Luft Brasil Ind. Com. Ltda

R. Dom Andrés Lamas, 56

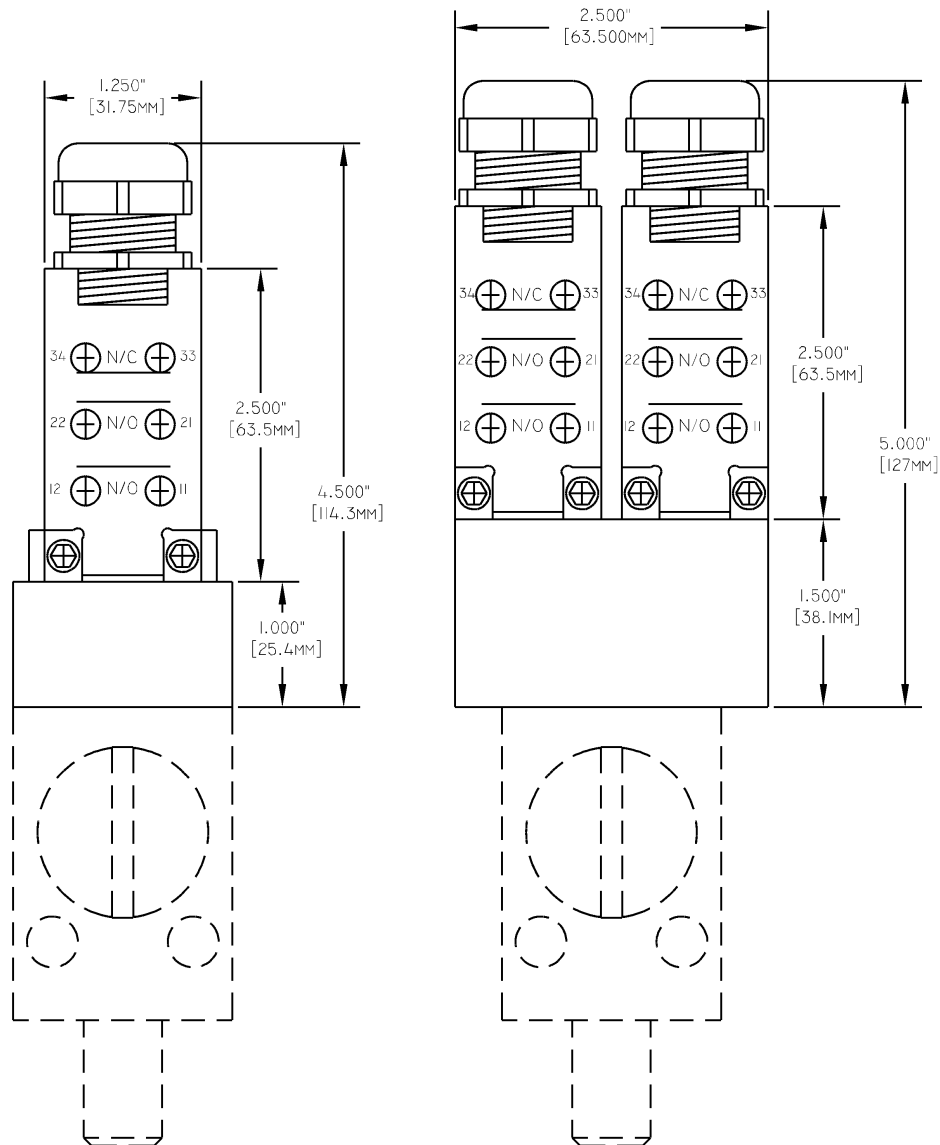
Tataupé São Paulo - SP

(11) 3795-0000

www.luftbrasil.com.br



Type Thermoplastic Bodied Switch on Type F, B, T, FN & D Interlocks



NOTES:

Option A is shown on the left. Option B is shown on the right.